

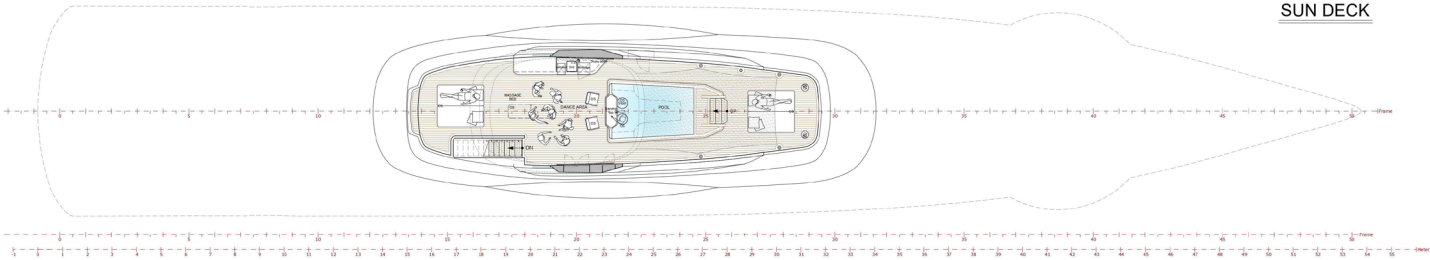
SPECIFICATION



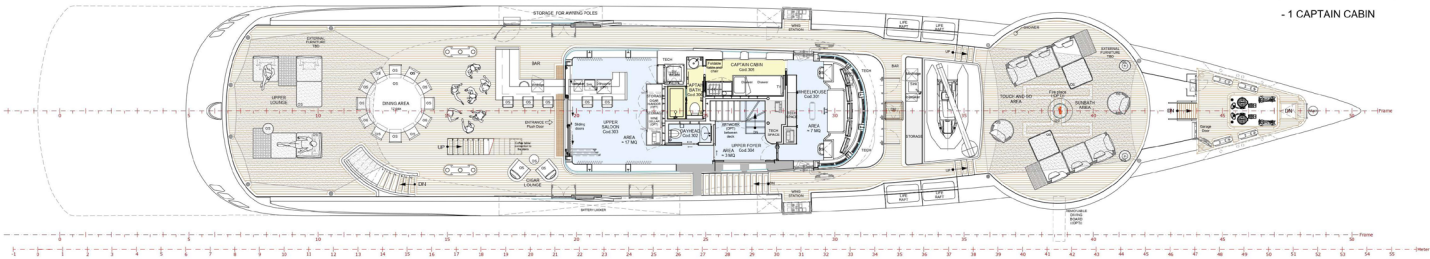
SILVER STAR I

55.2m (181') | Admiral | 2024

GENERAL ARRANGEMENT

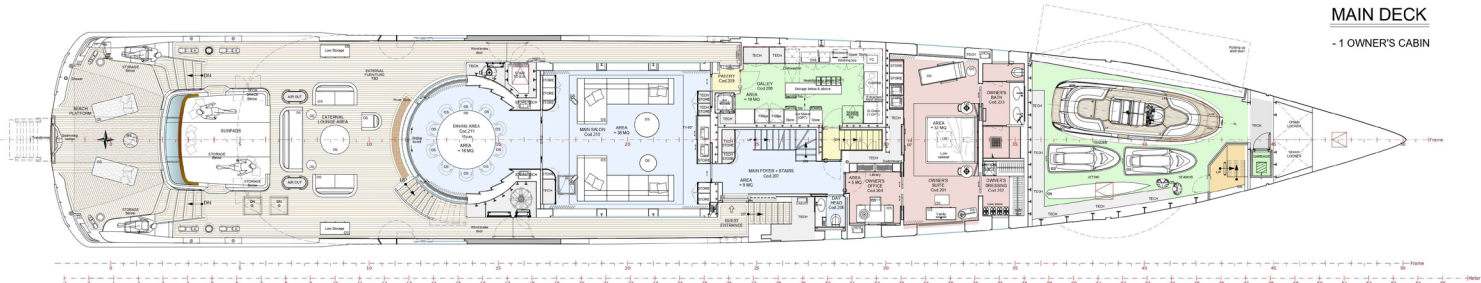


SUN DECK



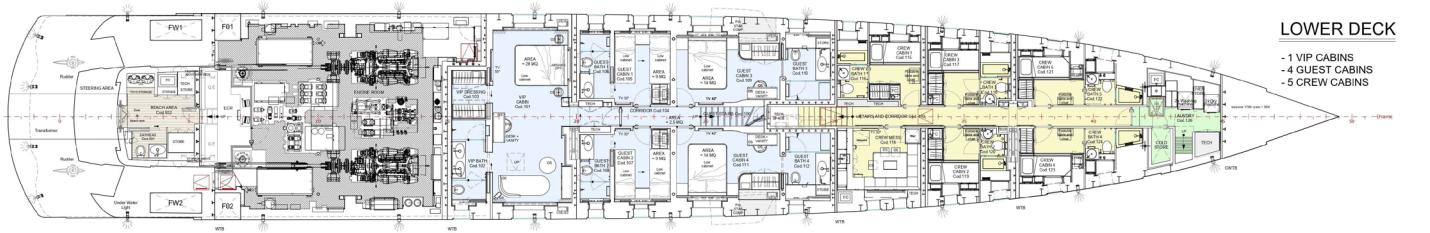
UPPER DECK

- 1 CAPTAIN CABIN



MAIN DECK

- 1 OWNER'S CABIN



LOWER DECK

- 1 VIP CABINS
- 4 GUEST CABINS
- 5 CREW CABINS

SPECIFICATION

MAIN SPECIFICATION

Length:	55.2m (181')
Beam:	8.6m (28'2")
Draft:	2.3m (7'54")
Build Year:	2024
Refit Year:	N/A
Builder:	Admiral (The Italian Sea Group)
Model:	Admiral S-FORCE 55 - ARMANI
Naval Architect:	Admiral
Exterior Designer:	GMC Architecture, by Gian Marco Campanino
Interior Designer:	ARMANI Interiors and GMC Architecture
GT:	499
Hull:	Aluminium
Hull Colour:	CHEVY WHITE
Hull Configuration:	Monohull
Superstructure:	Aluminium
Flag:	Malta - Valletta
Classification:	CØHULL,•MACH,Y(Ch), Unrestricted Nav., REG-YC Part A compliant, Green Plus (Y), UMS
MCA Compliant:	REG A
Fuel:	64000 L
Water:	16000 L
Holding Tanks:	GW 4,843 L//BW 1,000 L//Sludge 1,750 L, BILGE 1,875 L//Oil 1775 L // Jacuzzi 6,333
Cruising:	16.5 knots
Maximum:	18.0 knots
Number of Cabins:	6
Guests:	12
Sleeping Configuration:	MD: 1 Master, LD: 1 VIP, 2 Twin, 2 double, Crew Cabins/Berths: UD: 1 Captain cabin (single bed) LD: 5 Crew cabins (2 bunks)
VAT/Duty Paid:	VAT Not paid

SPECIFICATION

MACHINERY

Main Engines	
Engine Make/Model:	2 x CAT C32 ACERT (1926HP/1417kW @ 2300rpm)
Engine Hours:	136 (As of 2nd of October 2024)
Gearboxes for main Engines:	2x ZF 3000
Drive:	Conventional shafts and propellers

Speed Consumption per hours Range RPM

	Speed	Consump/Hr	Range	RPM
Economy Speed:	11.0 knots	97L /Hr	3750nm	1400
Cruising Speed:	16.5 knots	225L/Hr	2346nm	1900
Maximum Speed:	18.0 knots	315L/Hr	1828nm	2100

GENERATORS & ELECTRICITY

Output:	2 x 150 kW 400V/50Hz/3ph
Generators:	2 x CATERPILLAR C7
Generator Hours:	450 (As of 2nd of October 2024)
Generator Fuel Consumption:	26.2 L/hr at 70%
Shore Power:	ASEA AC75LC-3400V 150 kVA (50/60 Hz)

AIR CONDITIONING

Type:	Designed by FINSERVICE, fan coils and air handling units
-------	--

SPECIFICATION

OTHER MACHINERY

Water makers:	IDROMAR
Trim Tabs/Stabilizers:	CMC electric
Bow Thruster:	CMC, electric 90kW + stern 55kW
Steering System:	TWIN DISC hydraulic
Fuel Separator & Filtration:	ALFALAVAL
Sewage System:	HAMANN
Fresh Water System:	IDROMAR/GIANNESCHI
Bilge Water Filtration:	DVZ
Lube Oil Capacity:	1400 l
Waste Oil Capacity:	1500 l
Elevator:	N/A

COMMUNICATION SYSTEMS

SAT Com:	1 x VSAT 1000XTR 8W BUC + 1 SUPPORT+CABLE FOR A 2ND VSAT DOME SAME SIZE
Telephone System:	Internal comms between Control Station
SSB:	Sailor 6310 MF/HF 150W DSC Class A basic system
VHF:	2 x Sailor 7222 VHF w/DSC Class A + 1 x Sailor 6248 VHF
Cellular Phone System:	NA
Intercom:	NA

NAVIGATION SYSTEMS

Radars:	FURUNO (X-band, S-band, ECDIS FMD 3200)
Gyrocompass:	Sperry Marine NAVIGAT 200 Gyro Compass system mod. 10 24 Vdc + Sperry Marine Magnetic Console Repeater
Magnetic Compass:	Sperry Marine Magnetic Compass JUPITER w/180mm, overhead mounted
Auto Pilot:	Sperry Marine NAVIPILOT 4500
Depth Sounder:	Furuno FE-800
Night Vision:	NA
GPS:	2 x Furuno GP 170 Differential gps
Plotter:	NA
Wind/Speed Log:	B&G Triton 4"+ Airmar WX 220 weather station
Navtex:	Furuno navtex NX 700

SPECIFICATION

ENTERTAINMENT SYSTEM

Video Equipment:	I x TVRO SAT Intellian t100W World Wide LNB SAMSUNG LED TVs in all guest cabins, and in the main deck salon Audio/Video system connections available by the helideck for outdoor cinema 4K Apple TV, 4K multimedia players for guest areas
Audio Equipment:	Marantz surround amplifiers Sonance indoor and outdoor speakers and subwoofers

GALLEY & LAUNDRY EQUIPMENT

Main Galley Equipment

Cooking Equipment:	Cooktop, 2 x ovens, microwave all by MIELE
Refrigeration/Freezer:	2 x MIELE KFN
Dishwasher:	MIELE G7152

Crew Galley/Mess Equipment

Cooking Equipment:	NA
Refrigeration/Freezer:	FRIGO NAUTICA CUSTOM MADE, Volume ~20m3
Other:	Dishwasher Bosch

Additional Galley Equipment

Cooking Equipment:	NA
Refrigeration/Freezer:	NA
Other:	NA

Laundry Equipment

Main Laundry Equipment:	Laundry Equipment 2 x w/m + 2 x t/d all by MIELE
-------------------------	---

SPECIFICATION

TENDERS & TOYS

Tenders:	Williams Dieseljet 565 Yanmar 195 HP
Dive Gear:	Optional
Recreation:	Seabob storage space
Exercise Equipment:	Optional
Other:	Space for 2x jetskis in the garage

DECK EQUIPMENT

Anchor Windlass:	MUIR VRC I 1000
Aft Warping Capstans:	MUIR VRC I 1000
Anchors:	2 x POSIDONIA
Anchor Chain:	POSIDONIA
Boat Crane and Davits:	HYDROMAR for tender & SANGUINETI – CERTIFIED FOR MANRIDING for rescue
Passerelle:	Transformer Custom by BESENZONI
Swimming Platform:	Fixed

SECURITY, FIRE FIGHTING & SAFETY EQUIPMENT

Security Equipment

CCTV System:	4 x fixed cameras and 3 x motorized cameras
Cameras:	PTZ
Monitors:	Bridge and crew mess

Fire Fighting Equipment

Fire Control System:	AUTRONICA
Fire Extinguishers:	Hydrants and portable extinguishers
Alarms:	AMS by Elettromar

Safety Equipment

Life Rafts:	4 inflatable life rafts (2 each side), 12 people capacity/each
Life Rings:	4 in total. 2 off are fitted with smoke flares, lights and buoyant line
EPIRBs:	2 x Sailor Satellite EPIRB w/Gps
Flares:	YES
Medical Equipment:	1 x Cat A kit for 20 people

SPECIFICATION

Other:

- 1 x Radar transponder (SART) //
- 3 x line throwing appliance.
- 1 x Fire Buckets.
- 1 x Fire axe.
- 1 x Hand held air horn and spare cylinder.
- 1 x Set intl. code flags in a bag with a courtesy ensign drawer.
- 1 x Table of intl. flag codes.
- 1 x Set of NOT UNDER COMMAND lights.
- 1 x Set of NOT UNDER COMMAND SHAPES.
- 1 x Hand held lead line.

UPGRADES

- Low-heat windows Solar PVB Interlayer throughout the yacht
- VSAT System: Intellian v100 NX 3 Axis - KA Ready
- 5G upgrade - 2 SIM cards
- Humidor + wine cellar in the Upper Deck bar
- Pool mosaic

